

Field Feature Bill of Material (FFBM)
INSTALLATION of MICROCODE Level F12430
On 3746-900 attached to 3745-XXA
or
on 3746-950 alone.
With Service Processor Type 7585 (FC 5052)

Written by: C. Vallee
Checked by: C. Franoux
Approved by: A.Badino
Reviewed by: A. Bowen

3746 FBM	PN 26L0126 1 of 36	EC F12710 29 May 98	EC F34775 15 Jun 98	EC F12710A 06 Jul 98	EC F52323 23 Jul 98	
-------------	-----------------------	------------------------	------------------------	-------------------------	------------------------	--

3746 FBM	PN 26L0126 2 of 36	EC F12710 29 May 98	EC F34775 15 Jun 98	EC F12710A 06 Jul 98	EC F52323 23 Jul 98	
-------------	-----------------------	------------------------	------------------------	-------------------------	------------------------	--

Before Installation (Steps 1-8)

1.0 Machines Affected

3746 Models 9X0

- With Service Processor Type 7585-P02 (FC 5052).
- With MAE FC 3000 installed.
- Without Microcode Level F12430.

Checkpoint: Check that the APPN EC level is F12431.XXX.

If level is not present you must upgrade the Service Processor and the 3746-9x0 according to this instruction.

Note: Refer to **Chapter 3, Displaying the EC Level of Code** in the *Service Processor Installation and Maintenance (Based on 7585, 3172, and 9585)*, SY33-2120

2.0 Related BMs and ECs

2.1 Prerequisites

(Must be installed prior to this installation)

IMPORTANT NOTES

If you are installing at the same time the **conversion** of the MAE **FC 3000** to MAE **FC 3001** (II PN 02L1268). Check that:

1. Your customer has migrated his configuration files using the instructions documented in the SA33-0475, *MAE Configuration Migration Guide from FC 3000 to FC 3001*.
2. If the **PN** of the **MAE system card** currently plugged in your MAE is one of the following: **78H6297**, **11J7464**, or **89H8395**, you must have received the installation instructions PN **02L4064** to replace this card.

If one of the condition listed above is not met, do **NOT** install this EC. Call your support center for help.

3746 FBM	PN 26L0126 3 of 36	EC F12710 29 May 98	EC F34775 15 Jun 98	EC F12710A 06 Jul 98	EC F52323 23 Jul 98	
-------------	-----------------------	------------------------	------------------------	-------------------------	------------------------	--

2.2 Co-requisite

(Must be installed together)

B/M	Title
02L1268	Convert MAE from FC 3000 to FC 3001

2.3 Companion

(May be installed together)

B/M	Title
26L0379	Removal Token-Ring Attachment (if required)

3.0 BMs to be Installed

FBM	Title
26L0126	Installation of Microcode level F12430 on 3746-9x0 attached to 3745-XXA, and/or an 3746-950 stand-alone.

4.0 Preparation

- Familiarize yourself with the purpose and details of the installation instruction before negotiating machine time with the customer (refer to Figure 2 on page 8).
- Check all items listed on the BM(s) to determine that all parts have been received.
- Call your Support Center to obtain the Microcode Fixe(s) (MCF) to be installed with the new LIC.
Or, connect to <http://www.lagaude.ibm.com/3746pe> and download the mandatory fixe(s).
- Obtain the maintenance password from the Customer.
- Ensure that both the 3745 and 3746-9x0, types and models, are registered in RETAIN (CCPF).

For U.S.A machines, please call the Raleigh Multiplexor Support Center and verify your machine's registration in CCPF for:

- The seven digit serial number of the 3745 and 3746-9x0 are correct.
- The three digit model designation for the 3745 and 3746-9x0 are correct.

3746 FBM	PN 26L0126 4 of 36	EC F12710 29 May 98	EC F34775 15 Jun 98	EC F12710A 06 Jul 98	EC F52323 23 Jul 98	
-------------	-----------------------	------------------------	------------------------	-------------------------	------------------------	--

5.0 Programming

None.

6.0 Purpose and Description

Install the new level microcode level F12430.

- On the Service Processor, NNP(s) and MAE (if any), and
- Install on the 3746-9x0(s).

7.0 Installation Time

The installation time depends on the number of 3746-9x0 connected to the same Service Processor (Maximum 2). In the case of multiple 3746-9x0 connected to a Service Processor, global maintenance window must be requested to the customer. This will allow the customer to upgrade the 3746-900, and/or the 3746-950.

This global maintenance will be divided in up to 3 sub windows, one corresponding to each phase of the upgrade:

- Phase 1 is not disruptive to network traffic, and is used to upgrade the Service Processor and the NNP (if any).
- Phases 2 and 3, are used to update each 3746-9x0 machine attached to the Service Processor.

These phases are disruptive, but may be performed serially to avoid disrupting all machines at the same time.

- Nondisruptive operation estimated time: 3746-9x0/MOSS-E Code level upgrade on the Service Processor: 35 up-to 60 minutes for LIC install + 35 to 45 minutes per NNP + 18 minutes to apply the latest MCFs.
- Disruptive operation estimated times per 3746-9x0:
 - 3746-9x0 General IML: 6 minutes.
 - 3746-9x0 EEPROM Upgrade: 6 minutes.

To be reported as MES installation.

FB/M Installed	Machine Hrs	System Hrs	CE Hour	Nbr of CE
26L0126	2 to 3	0.0	3	1

8.0 Tools/Materials Required

None.

3746 FBM	PN 26L0126 6 of 36	EC F12710 29 May 98	EC F34775 15 Jun 98	EC F12710A 06 Jul 98	EC F52323 23 Jul 98	
-------------	-----------------------	------------------------	------------------------	-------------------------	------------------------	--

Installation (Steps 9-12)

9.0 Safety

Not applicable.

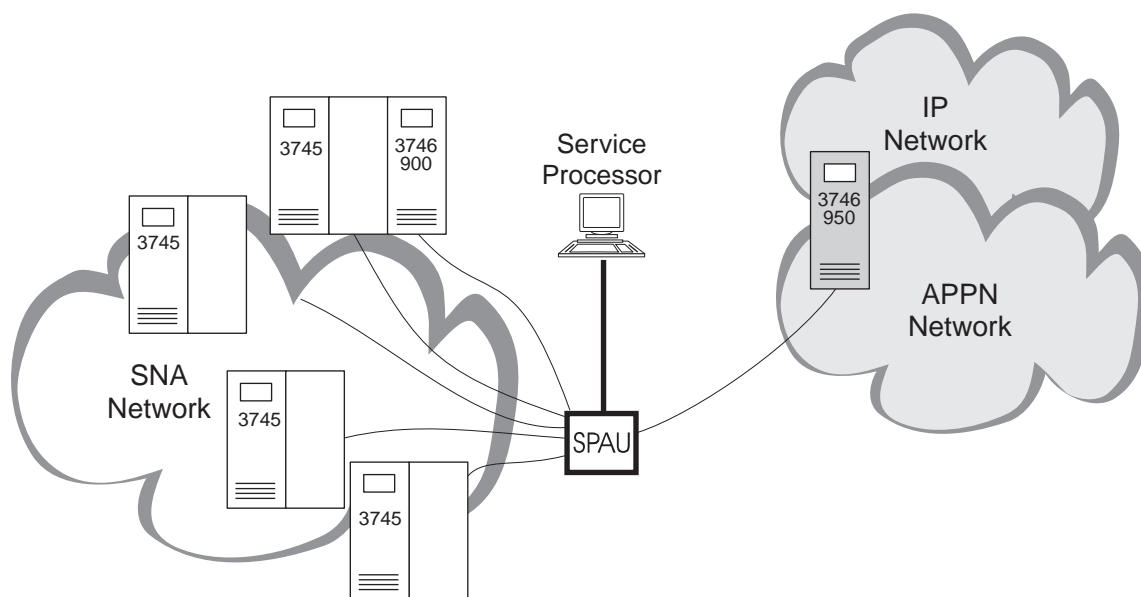
10.0 Details of Installation

The largest configuration will be upgraded in 3 phases:

Phase 1: 3746-9x0/MOSS-E code level upgrade on the Service Processor as described in 10.1, "Procedure 1 - 3746-9x0/MOSS-E Code Level Upgrade."

Phase 2: Code level upgrade on the first 3746-9x0, as described in 10.3, "Procedure 2 - 3746-9x0 Code Level Upgrade.."

Phase 3: Code level upgrade on the second 3746-9x0 (if any), as described in 10.3, "Procedure 2 - 3746-9x0 Code Level Upgrade.."



Legend

SPAU Service Processor Access Unit

Figure 1. Service Processor Maximum Configuration.

3746 FBM	PN 26L0126 7 of 36	EC F12710 29 May 98	EC F34775 15 Jun 98	EC F12710A 06 Jul 98	EC F52323 23 Jul 98	
-------------	-----------------------	------------------------	------------------------	-------------------------	------------------------	--

If you are migrating a MAE from FC 3000 to FC 3001, refer to Figure 2 to get the sequence of the installation tasks and the documentation to be used.

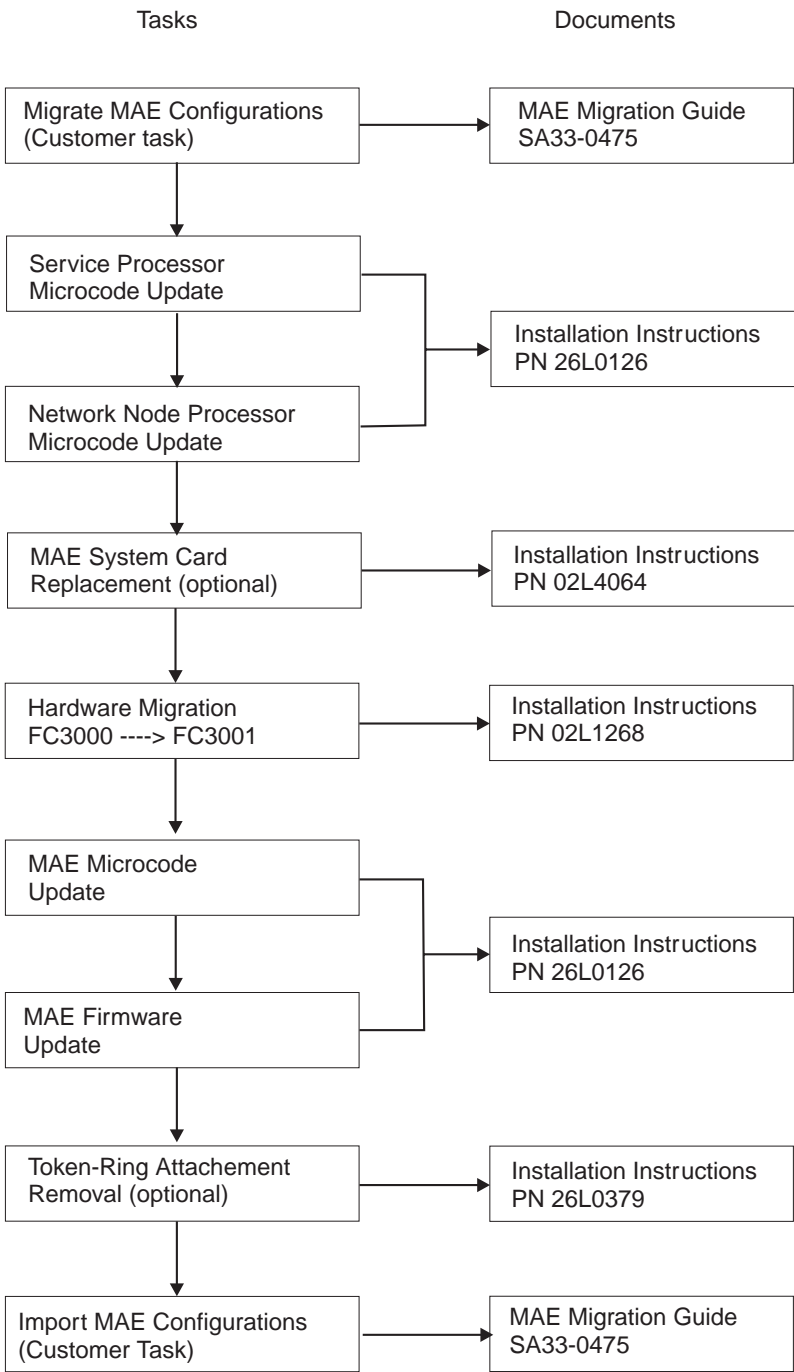


Figure 2. MAE FC 3000 to 3001 Migration Scenario

10.1 Procedure 1 - 3746-9x0/MOSS-E Code Level Upgrade

Go To

What is the EC level of the code currently installed on your SP?

- Microcode EC **F12380X** or above (microcode available on **CD-ROM**), go to 10.1.5, "Saving Configuration on Diskette" on page 12
- Any other EC level **prior to F12380** (microcode available on **OD**) , go to 10.1.1, "Saving the Configuration on the Optical Disk."

10.1.1 Saving the Configuration on the Optical Disk

- ___ 1. If not already logged, enter the **Service Processor maintenance password** (default is IBM3745).
- ___ 2. Double click on the "**Service Processor icon**".
- ___ 3. Click on "**Operation Management**".
- ___ 4. Double click on "**Manage Disks and Databases**".
- ___ 5. Click on **Save databases on optical disk** radio button.
- ___ 6. Click on "**OK**" and follow the prompts.
- ___ 7. When prompted, Insert the optical disk.
- ___ 8. Click on "**Cancel**" to exit from the function.

10.1.2 Installing MES Data Save Function.

- ___ 1. Insert the **Customer Data Migration diskette** (PN 02L3850) in the Service Processor diskette drive.
- ___ 2. Enter the Service Processor maintenance password (default is IBM3745).
- ___ 3. Double click on the "**Service Processor object icon**".
- ___ 4. Click on "**Change Management**".
- ___ 5. Double click on "**Manage Microcode Fixes**".
- ___ 6. On **Manage Microcode Fixes** window, click on "**View**" (On function bar). Then, click on "**Change directory path**" (On pull down menu)
- ___ 7. On **Change Directory Path** window, enter **A:*.***. Then, click on "**OK**".

- ___ 8. On **Manage Microcode Fixes** window, click on the **fixes** to be applied.

LIC Level	Apply MCF
D2251X	MD22426.418
D2256X	MD22726.418
D4612X	MD22526.418
D4613X	MD22326.418

- ___ 9. Click on **"File"** (On the function bar). Then, click on **"Move"** (On pull down menu).
- ___ 10. On the **Move Microcode Fix files** window, enter **J:\MCF**. Then, click on **"OK"**.

Enter the new path specification following the format {drive:\directory}:

J:\MCF\

OK Cancel Help

- ___ 11. On the **Change Directory Path** window, enter **J:\MCF\ALL**. Then, click on **"OK"**.

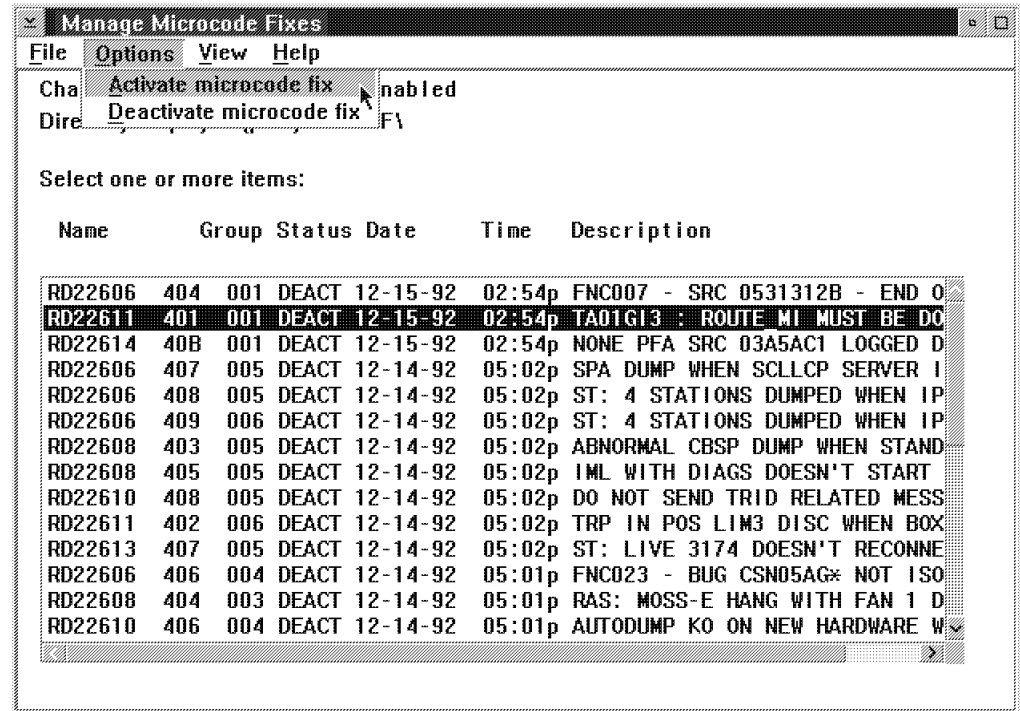
Enter the full path of path or directory to be displayed following the format {drive:\directory\filename.extension or *}, or click on the OK push button for default directory:

J:\MCF\ALL

OK Cancel Help

- ___ 12. Remove the diskette disk from the drive.

13. On the **Manage Microcode Fixes** window, Click on the lines of the MCFs to be applied "**MES-Data Migration**", click on "**Options**" (On function bar). Then, click on **Activate microcode fix** (On pull down menu).



10.1.3 Verifying the MCF status.

1. Enter the Service Processor maintenance password
2. Double click on the "**Service Processor object icon**".
3. Click on "**Change Management**".
4. Double click on "**Manage Microcode Fixes**"
5. Click on "**View**", click on "**Change directory path**"
6. Enter the "**directory path**": J:\MCF\ALL. Then,click on **OK**.
7. The status of the MCF just applied should be "**ACT**".

MCF Status ACT?

NO, Call Support..

YES, continue with next step.

8. Exit the **Change Management** functions

10.1.4 Saving Customer Data on Diskette.

- ___ 1. On the **MOSS-E View** window, click on **Program**.
- ___ 2. Double click on **Log OFF MOSS-E**, then double click on **Log ON MOSS-E**.
- ___ 3. Insert the **backup** optical disk on the ODD.
- ___ 4. Double click on the "**Service Processor object icon**".
- ___ 5. Click on "**Functions to Use Under PE Guidance Only**".
- ___ 6. Double click on "**Save Customized data on diskette**".
- ___ 7. When prompted, insert the **Configuration Parameters diskette** (PN 02L3427) on the diskette drive.

Note: Only one **Configuration Parameters diskette** is provided, if more than one diskette is required, get additional blank diskette (1.44Mb).

- ___ 8. Click on "**OK**" follow the prompts and wait for completion..
- ___ 9. Click on "**Close**".

Go to, 10.1.6, "Power OFF the Service Processor" on page 13 .

10.1.5 Saving Configuration on Diskette

- ___ 1. If not already logged, enter the **Service Processor maintenance password** (default is IBM3745).
- ___ 2. Double click on the "**Service Processor icon**".
- ___ 3. Click on "**Operation Management**".
- ___ 4. Double click on "**Manage Disks and Databases**".
- ___ 5. Click on **Save database on diskette** radio button.
- ___ 6. Click on "**OK**" and follow the prompts.
- ___ 7. When prompted, Insert the **Configuration Parameters diskette** (PN 02L3427) in the diskette drive.

Note: Only one **Configuration Parameters diskette** is provided, if more than one diskette is required, get additional blank diskette (1.44Mb).

- ___ 8. When completed, click on "**OK**" and remove the diskette.

Go to, 10.1.6, "Power OFF the Service Processor" on page 13 .

10.1.6 Power OFF the Service Processor

- ___ 1. On the **MOSS-E View** window, click on **Program**.
- ___ 2. Double click on **shut-down**, then enter the maintenance password (default is IBM3745), and click on **OK**.
- ___ 3. When the pop-up appears saying shut down has completed, power OFF the Service Processor.

Go To

Is the **OD** drive **installed** on your 7585-P02?

- **YES**, Go to 10.1.7, "Removing the Optical Disk Drive (ODD) from a 7585."
- **NO**, did you receive the **FBM 25L4401** to install the MPA card?
 - **YES**, using the FBM 25L4401 install the MPA card then, Go to 10.1.8, "LIC Installation" on page 14.
 - **NO**, Go to 10.1.8, "LIC Installation" on page 14.

10.1.7 Removing the Optical Disk Drive (ODD) from a 7585

- ___ 1. **On the rear side of the ODD**, turn OFF the power switch (0).
- ___ 2. Disconnect the ODD Power cord from the ac Outlet Distribution Box or from the wall ac outlet, and the other end from the rear side of the ODD.
- ___ 3. **On the rear side of the Service Processor**, disconnect the signal cable from SCSI adapter (Position 3).
- ___ 4. Remove the ODD. Then, pack it into the return box (PN 32H0346) provided with this FBM

Go to 10.1.8, "LIC Installation" on page 14 .

10.1.8 LIC Installation

- ___ 1. Insert the **Service Processor installation diskette PN 26L0236** in the diskette drive, then
- ___ 2. Power **ON** the Service Processor.
- ___ 3. Insert the **CD-ROM** into the drive, when the diskette is booted, follow the prompts on the screen.
- ___ 4. Wait for a while ... several messages will appear: Build hardisk, reboot, format ...
- ___ 5. When prompted, Insert the **Configuration Parameters diskette (PN 02L3427)** in the diskette drive.
- ___ 6. Wait for a while, when prompted insert the **Service Processor installation diskette PN 26L0236** in the diskette drive.
- ___ 7. Wait until message Update Licensed Internal Code, Operation Successfully Completed; then, press the **Enter** key..
- ___ 8. When prompted remove the diskette from the diskette drive. Then, press **Enter** key and remove the CD.
- ___ 9. The system re-boot, wait for a while ..., click on **OK** button when the message '**Do you want to customize your SP**' is displayed.

Note: If not prompted select the function 'SP customization' from the service processor configuration menu.

On the **Service Processor (SP) Customization** screen:

- ___ 10. Click on every **View Customize** check boxes.
- ___ 11. Click on **Modem type** drop down list, then select (click on) the modem and connection type of the modem used. Then, click on **Next>>** button.

- ___ 12. On the **Customer Information Customization** screen, verify the information recorded and make the necessary changes. Then, click on **Next>>** button.

- ___ 13. On the **SP Time and Date Customization** screen, verify the information recorded and make the necessary changes. Then, click on **Next>>** button.

14. On the **Service LAN Addresses** screen, verify the information recorded and make the necessary changes. Then, click on **Next>>** button.

	IP address	Subnet mask	Hostname	UAA/LAA
Service Processor:	9.100.76.46	255.255.255.0	SP23456	400000301111
NMP-A:	9.100.76.47	255.255.255.0	CA134568	
NMP-B:	not installed			
TIC3 2080:	9.100.76.48	255.255.255.0		
SP default router:	9.100.76.1			
MAE:	9.100.76.49	255.255.255.0	DA134568	

LAN Manager

Do you have a LAN manager? ☐ Yes ☒ No C&SM LAN ID: MOSSE

<<Previous Next>> Help

15. On the **Netview Link(s)/Reporting Customization** screen, verify the information recorded and make the necessary changes. Then, click on **Next>>** button.

NetView Link(s)/Reporting Customization

☒ Generate alerts

NetView Link(s)

Link(s) through? ☐ SNA ☒ APPN

How many? ☐ 1 ☒ 2

Link type? ☒ LAN ☐ SDLC

Machine Identification

Machine type	Model	Serial number
3745	17A	XX - XXXXX

Local Node Characteristics

Network ID	Local node name
SYSTSTAP	MOSSNMVT

LAN Link

TIC2 or TIC3 LAA: 400000502080 hex

TIC3 RSAP: 08 hexadecimal [04-9C]

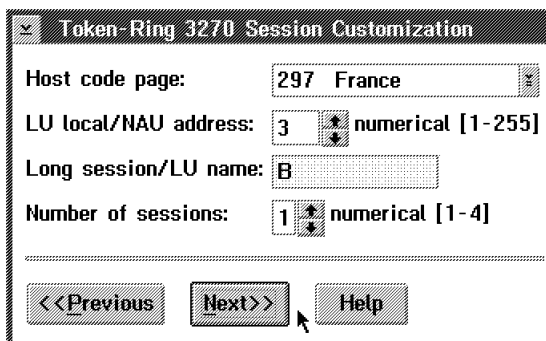
Customize 3270 sessions? ☒ Yes ☐ No

Switched SDLC Link Telephone Number

0143457280

<<Previous Next>> Help

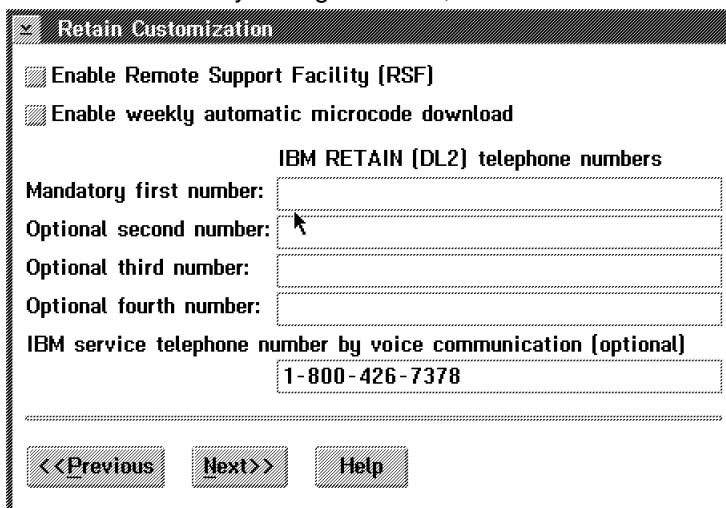
- ___ 16. On the **Token-Ring 3270 Session Customization** screen, verify the information recorded and make the necessary changes. Then, click on **Next>>** button.



The screenshot shows the 'Token-Ring 3270 Session Customization' window. It contains the following fields and controls:

- Host code page:** A dropdown menu showing '297 France'.
- LU local/NAU address:** A numeric spinner box set to '3' with the label 'numerical [1-255]'.
- Long session/LU name:** A text box containing the letter 'B'.
- Number of sessions:** A numeric spinner box set to '1' with the label 'numerical [1-4]'.
- At the bottom, there are three buttons: '<<Previous', 'Next>>', and 'Help'. A mouse cursor is pointing at the 'Next>>' button.

- ___ 17. On the **Retain Customization** screen, verify the information recorded and make the necessary changes. Then, click on **Next>>** button.



The screenshot shows the 'Retain Customization' window. It contains the following fields and controls:

- Two checked checkboxes: 'Enable Remote Support Facility (RSF)' and 'Enable weekly automatic microcode download'.
- A section header: 'IBM RETAIN (DL2) telephone numbers'.
- Four text input fields:
 - Mandatory first number:** (empty)
 - Optional second number:** (empty, with a mouse cursor pointing at it)
 - Optional third number:** (empty)
 - Optional fourth number:** (empty)
- A text label: 'IBM service telephone number by voice communication (optional)'.
- A text box containing the number '1-800-426-7378'.
- At the bottom, there are three buttons: '<<Previous', 'Next>>', and 'Help'.

- ___ 18. On the **DCAF Customization** screen, verify the information recorded and make the necessary changes. Then, click on **Next>>** button.

DCAF Customization

Attached Consoles

	LU name	Destination address (hexadecimal)	RSAP (hex [04-9C])
<input checked="" type="checkbox"/> SNA	DCAFSNA	400000502080	04
<input checked="" type="checkbox"/> APPN	DCAFAPPN	400000502080	08
<input checked="" type="checkbox"/> LAN	DCAFLAN		

SDLC Attached Console

☒ SDLC DCAFSDLC

Accept any incoming calls on SP? ☒ Yes ☐ No

Local phone number: 0492116106

<<Previous Next>> Help

- ___ 19. On **SP Customization Message** screen, click on **Close**, then click on **Yes** button to validate your customization.

SP Customization Message

? You have terminated your SP customization. Click on:

- Yes to validate your customization,
- or No to exit without saving,
- or Cancel to return to SP customization.

Yes No Cancel Help

- ___ 20. The Service Processor customization start, follow the progress on the following screen. wait until completion.

Service Processor Customization - Progress

Service Processor customization in progress. It may take a few minutes to complete. Please wait ..

- ___ 21. Wait until completion. Then, click on **OK** button.

Service Processor Customization Completion

i The Service Processor Customization successfully completed.

OK

- ___ 22. If necessary, the Service Processor will reboot automatically.

Note: If an error occurs, note the displayed message and press **Enter**. Keep the diskette available for investigation (log files: EULHIERR.LOG, OUT_BAK.1 and OUT_BAK.2), stored on diskette and hard disk for PE.

___ 23. Log On the MOSS-E.

10.1.9 Upgrading the NNP(s) on 3746-9x0.

- ___ 1. On the **MOSS-E View** screen, double click on the **3746-9x0** icon.
- ___ 2. On the **3746-9x0 Menu** screen, click on **Network Node Processor (NNP) Management**.
- ___ 3. Double click on **Install/Remove/Change/Restore LIC/NNP**.
- ___ 4. Click on **NNP-A**, then click on **Restore LIC on NNP**.
- ___ 5. When requested, insert the **Network Node Processor installation diskette (PN 26L0237)** in the SP then in the NNP diskette drive and follow the prompts until **Operation successfully completed** (Up to 45')
- ___ 6. Click on **Close**.
- ___ 7. **If installed, repeat on the above procedure on NNP-B**; then, continue with next step.

Go To

1. Are you migrating a MAE from **FC 3000** to **FC 3001**?
 - **YES**, go to step 2.
 - **NO**, go to 10.1.10, "Installing the MAE" on page 20.
2. Verify the **PN** of the **MAE system card** plugged in your MAE.
If the **PN** of the card is one of the following: **78H6297, 11J7464, or 89H8395**, **replace** the card using the installation instructions **PN 02L4064** then go to step 3.
3. Using the installation instructions **PN 02L1268**, install the new hardware required to support FC 3001 when completed go to step 4
4. Did your customer decide to remove the token-ring link between the MAE and the 3746-9X0?
 - **YES**, using the installation instructions **PN 26L0379**, remove this link then go to 10.1.10, "Installing the MAE" on page 20.
 - **NO**, go to 10.1.10, "Installing the MAE" on page 20.

10.1.10 Installing the MAE

- ___ 1. Double click on the "3746-9X0 object icon"
- ___ 2. Click on "Multiaccess Enclosure Management".
- ___ 3. Now double click on **Install/Remove/Change LIC on MAE**.

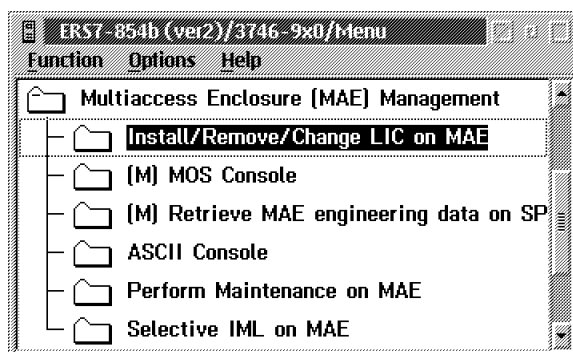


Figure 3. Install Multiaccess Enclosure

- ___ 4. Click on **Install MAE....**

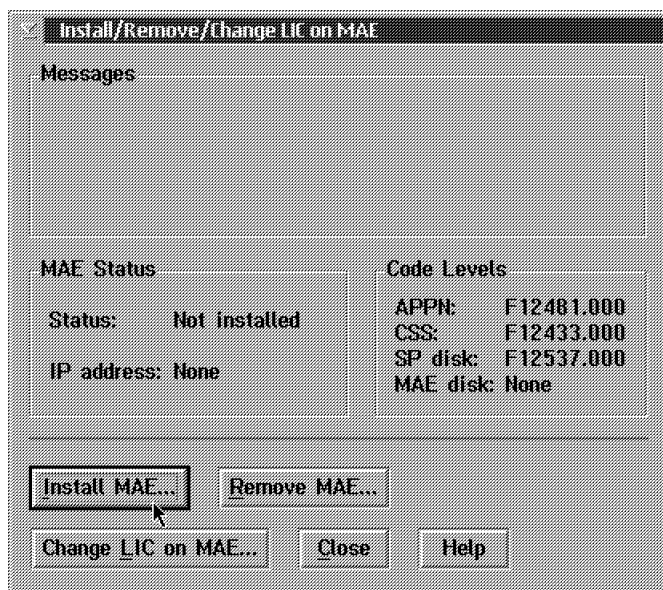
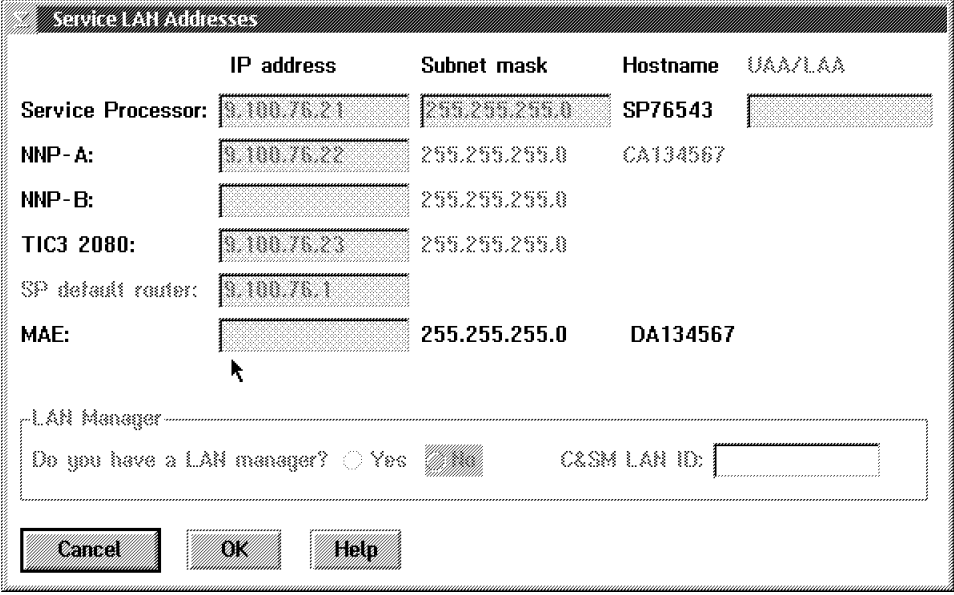


Figure 4. Install Multiaccess Enclosure

- 5. Verify or enter the **MAE IP address**, then click on **OK**.



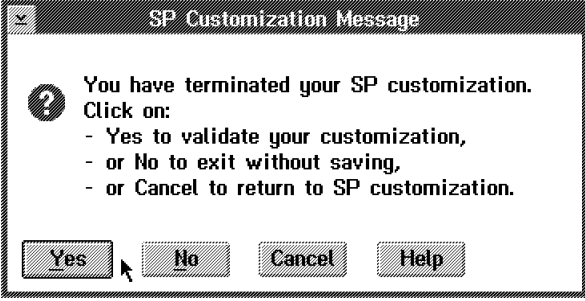
The 'Service LAN Addresses' dialog box contains a table with the following data:

	IP address	Subnet mask	Hostname	UAA/LAA
Service Processor:	9.100.76.21	255.255.255.0	SP76543	
NNP-A:	9.100.76.22	255.255.255.0	CA134567	
NNP-B:		255.255.255.0		
TIC3 2080:	9.100.76.23	255.255.255.0		
SP default router:	9.100.76.1			
MAE:		255.255.255.0	DA134567	

Below the table, there is a section for 'LAN Manager' with the question 'Do you have a LAN manager?' and radio buttons for 'Yes' and 'No' (selected). There is also a text field for 'C&SM LAN ID:'. At the bottom are 'Cancel', 'OK', and 'Help' buttons.

Figure 5. Service LAN Addresses

- 6. Click on **Yes** to record your parameters.



The 'SP Customization Message' dialog box contains the following text:

? You have terminated your SP customization.
Click on:

- Yes to validate your customization,
- or No to exit without saving,
- or Cancel to return to SP customization.

At the bottom are 'Yes', 'No', 'Cancel', and 'Help' buttons. A mouse cursor is pointing at the 'Yes' button.

Figure 6. SP Customization Message

- 7. When completed, click on **OK**.



The 'Service LAN Addresses Customization Completion' dialog box contains the following text:

i Service LAN Addresses Customization successfully completed.

At the bottom is an 'OK' button.

Figure 7. SP Customization Completed

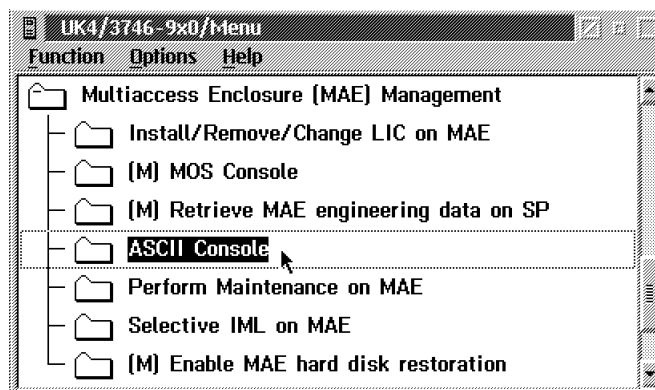
- 8. The MAE code is now being installed (it takes about 10 mn), when completed click on **Close**.

Note: After a few minutes, verify that the MAE link icon is **green** (polling the MAE does not start immediately to give the green icon).

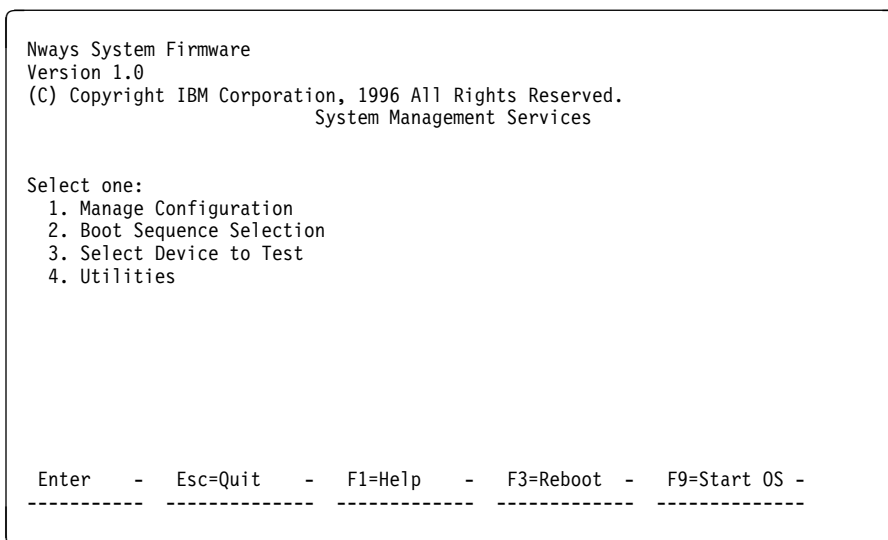
3746 FBM	PN 26L0126 22 of 36	EC F12710 29 May 98	EC F34775 15 Jun 98	EC F12710A 06 Jul 98	EC F52323 23 Jul 98	
-------------	------------------------	------------------------	------------------------	-------------------------	------------------------	--

10.2 Installing the firmware

- ___ 1. Double click on **ASCII Console**".



- ___ 2. When the QVT screen is displayed, click on **OK**.
- ___ 3. Press the **Reset** button on the MAE.
- ___ 4. Several window are displayed during tests. Wait until the **Boot Information** window is displayed.
- ___ 5. Press **F1** when prompted (to prematurely terminate boot).
- ___ 6. Enter the Multiaccess Enclosure supervisory password when required: **2216**.
- ___ 7. On the **System Management Services** window, select **option 4 - Utilities**



- ___ 8. Select **7. Update System Firmware** from the utilities panel.
- ___ 9. The System Firmware Update panel is displayed:

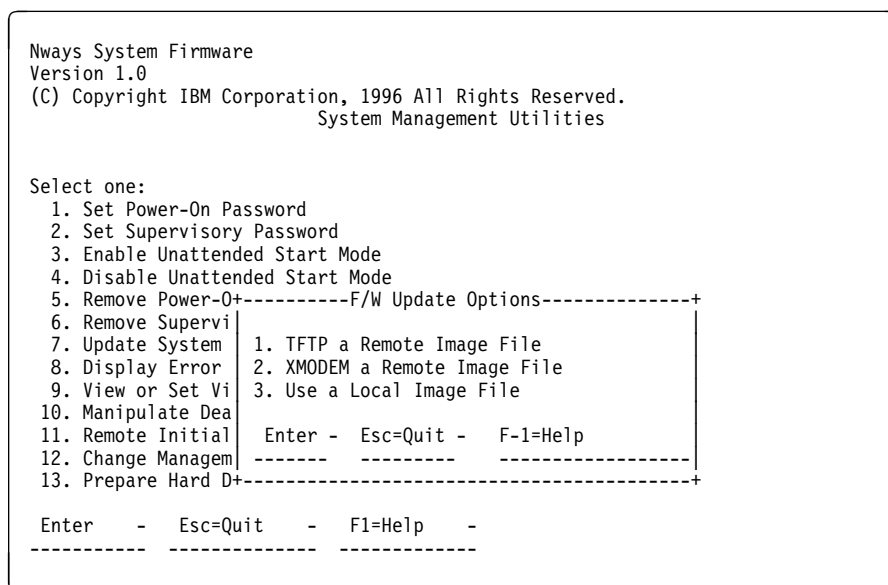
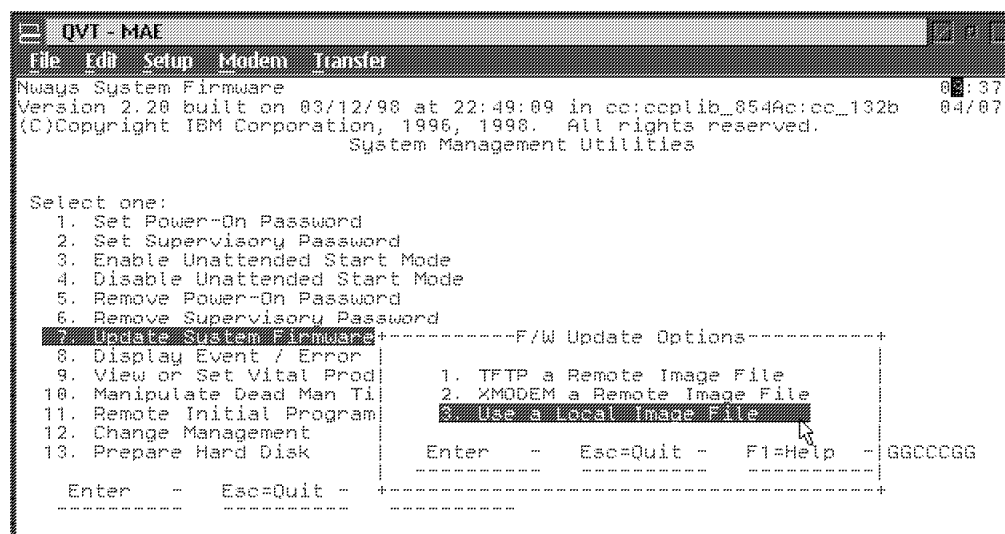


Figure 8. System Firmware Update Panel

Attention: Do not power off the multiaccess enclosure during the process of updating the firmware. If the update fails, the multiaccess enclosure will boot a backup firmware image. If this happens, repeat the update procedure to reload the onboard firmware image.

- ___ 10. From the **F/W Update Options** menu, select **3. Use a Local Image File**, then press **Enter**.



- ___ 11. Follows the prompts, enter the **Local File Name: c:\firm.ld**, then press **Enter**

Note: If the firmware loaded on the MAE system card is at the same level as the firmware loaded on the SP hard drive, you will get the following message: "The firmware update file is at the same level as the system firmware. Firmware update cancelled. Press enter". Then go to 10.2.1, "Applying the Latest MCFs Received." on page 27, otherwise continue with the next step.

```

QVT - MAE
File Edit Setup Modem Transfer
Nvays System Firmware 18:28:
Version 3.00 built on 06/24/98 at 23:00:27 in cc3:ccplib_054Ma:cc3_18b 07/08/
(C)Copyright IBM Corporation, 1996, 1998. All rights reserved.
System Management Utilities

Select one:
1. Set Power-On Password
2. Set Supervisor+-----F/W UPDATE:Local File-----+
3. Enable Unatten|
4. Disable Unatten| Enter Local File Name or Press Enter
5. Remove Power-On| for a list:
6. Remove Supervi|
7. Update System | c:\firm.ld
8. Display Event |
9. View or Set Vi | Enter - Esc=Quit - F1=Help -
10. Manipulate Dea| -----
11. Remote Initial+-----
12. Change Managem| Enter - Esc=Quit - F1=Help -
13. Prepare Hard D| -----
Enter - Esc=Quit - +-----

```

- ___ 12. On confirmation window, press **Y**.
- ___ 13. The following window is displayed, press **Enter**.

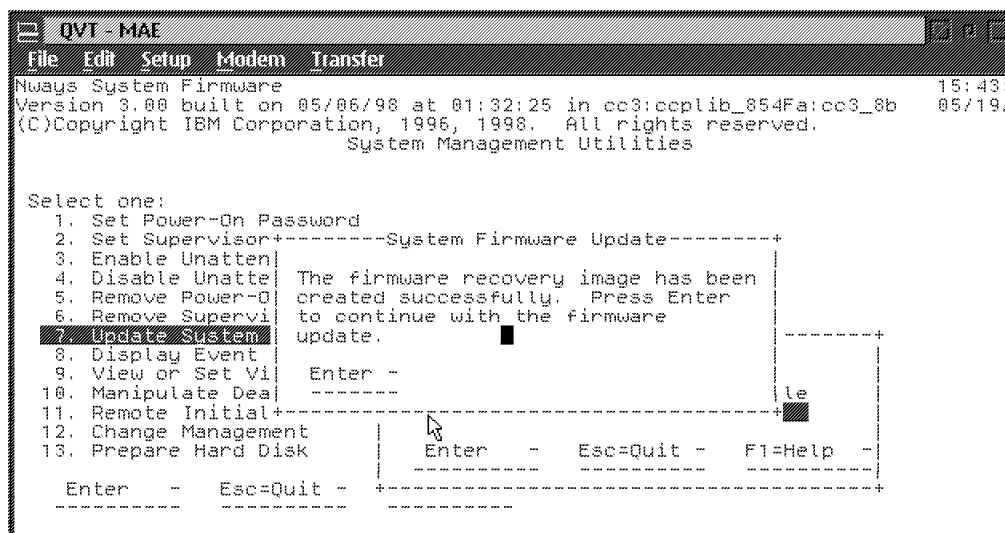
```

QVT - MAE
File Edit Setup Modem Transfer
Nvays System Firmware 15:41:
Version 3.00 built on 05/06/98 at 01:32:25 in cc3:ccplib_054Fa:cc3_8b 05/19/
(C)Copyright IBM Corporation, 1996, 1998. All rights reserved.
System Management Utilities

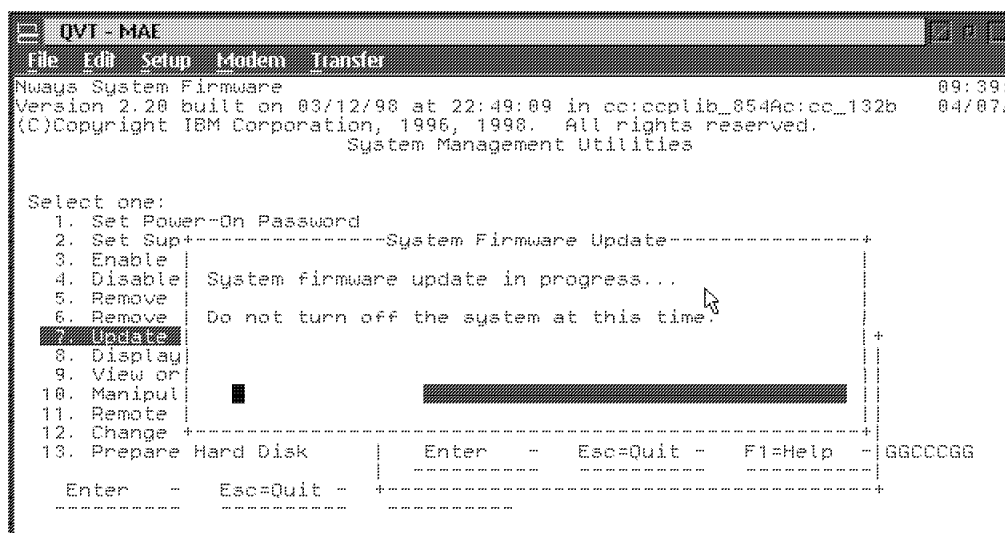
Select one: +-----System Firmware Update-----+
1. Set Power-On P|
2. Set Supervisor| It is recommended that you create a
3. Enable Unatten| firmware recovery image before
4. Disable Unatten| updating the firmware. The firmware
5. Remove Power-On| recovery image can be used to start
6. Remove Supervi| the system if the update process is
7. Update System | interrupted. Press Enter to create
8. Display Event | a firmware recovery image; press Esc
9. View or Set Vi | if you already have a current
10. Manipulate Dea|
11. Remote Initial| Enter - Esc=Quit - @le
12. Change Managem| ----- @
13. Prepare Hard D| ----- v
Enter - Esc=Quit - +-----+Help -

```

___ 14. When recovery image has been done, press **Enter**.



___ 15. Several windows are displayed following by:



Note: Do not switch the system off. The process erases the old firmware and copies the new firmware into flash memory. If the machine is powered off before the process is complete, you will need to reload the firmware from the recovery image.

- ___ 16. A completed message appears when the firmware is updated.

- ___ 17. Press **Enter** to restart the system.
- ___ 18. Press the **Space bar** to get the console.
- ___ 19. Then close the ASCII window and go to 10.2.1, “Applying the Latest MCFs Received..”

10.2.1 Applying the Latest MCFs Received.

Important

Did you receive from your Support Center any MCFs to be installed on the new LIC?

No Go to 10.3, “Procedure 2 - 3746-9x0 Code Level Upgrade.” on page 28

YES Apply the MCFs received according to procedure '**Handling the Micro-code Fixes on the Licensed Internal Code**' listed in the *Service Processor Installation and Maintenance (Based on 7585, 3172, and 9585)*, SY33-2120

End of Procedure 1, Go to 10.3, “Procedure 2 - 3746-9x0 Code Level Upgrade.” on page 28.

10.3 Procedure 2 - 3746-9x0 Code Level Upgrade.

Important

Ask the Customer for a maintenance window on the 3746-9x0 with traffic deactivated.

10.3.1 3746-9x0 EEPROM Upgrade.

- ___ 1. Click on **3746-9x0 Menu**.
- ___ 2. Click on **Change Management**.
- ___ 3. Double click on **Upgrade/Downgrade EEPROM**.
- ___ 4. The **Upgrade Status** area will show the processors to be changed in reverse video.
- ___ 5. Click on **OK** to start the upgrade function, wait (up to 10 minutes) until the Upgrade Status is completed for each processor.
- ___ 6. Click on **Cancel** to leave the function.

10.3.2 Saving Configuration Parameters

- ___ 1. Double click on the **Service Processor** icon.
- ___ 2. Click on **Operation Management**.
- ___ 3. Double click on **Manage Disks and Databases**.
- ___ 4. Use the radio button to select **Save databases on diskette** to save the configuration parameters. When prompted, insert **Configuration Parameters diskette** (PN 02L3427) into the diskette drive.
- ___ 5. Click on **OK** and wait for completion. If error, note message and contact support.
- ___ 6. Click on **Cancel** to exit from the function.

10.3.3 Updating Installation Parameters Diskettes

Once you have upgraded the hardware of the machine, you have to regenerate the format on the Installation Parameters Diskettes using the following procedure: (Duration approximately 13 minutes)

- ___ 1. On the **Service Processor** menu, click on **Configuration Management**, click on **Manage 3745/3746 Installation/Removal**.
- ___ 2. On the **Controller Installation** menu, Click on the **3746-9x0** installed, then Click on **SAVE**.

Following pop up window confirming **Saving Active CDF-E as Reference**:

- ___ 3. Insert the **3746-900 installation parameters diskette (PN 17G5878)** of the 3746-9x0, then click on **OK**.
- ___ 4. On the third pop up screen confirming CDF-E saved to diskette, remove diskette as instructed, click on **OK**.

- ___ 5. Perform the above saving procedure for the backup diskettes, then click on **Cancel**.

10.3.4 Performing a General IML.

- ___ 1. On the **MOSS-E View** screen, double click on the **3746-9x0** icon.
- ___ 2. On the **3746-9x0 Menu** screen, click on **Operation Management**.
- ___ 3. Double click on **Perform a General IML**; Then click on **Yes** button
- ___ 4. On the **Perform a General IML** window, click on **NO** to start an IML without diagnostic.

Important Note

Following this installation the traffic can't be reactivated without **updating the configuration files**. Ask your customer or update the files as described in chapter 10.4.1, "Updating the Configuration Files" on page 30

End of Procedure 2..

Is another 3746-9x0 installed?

- **Yes**, Go to 10.3, "Procedure 2 - 3746-9x0 Code Level Upgrade." on page 28.
- **No**, Go to 10.4, "Returning the Machine to Customer" on page 30.

10.4 Returning the Machine to Customer

10.4.1 Updating the Configuration Files

With this new level of code the **configuration files** must be **updated**, update the files as follows:

- ___ 1. Double click on the **3746-9X0 Icon**.
- ___ 2. Click on **Network Node Processor (NNP) Management**
- ___ 3. Double click on **CCM - Controller Configuration and Management**
- ___ 4. Click on **File**, click on **Open**

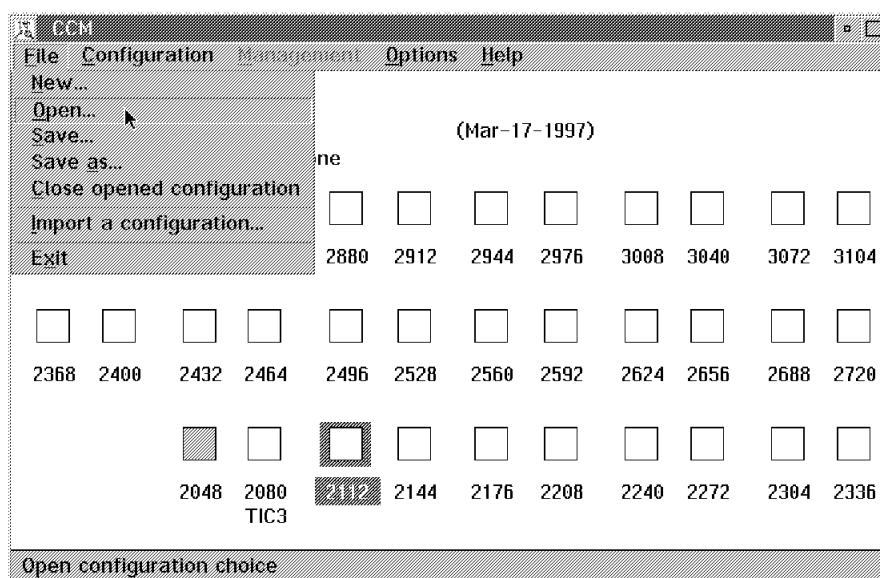


Figure 9. Main Window File Menu

- ___ 5. From the list prompted, select the configuration file, then click on **Open**

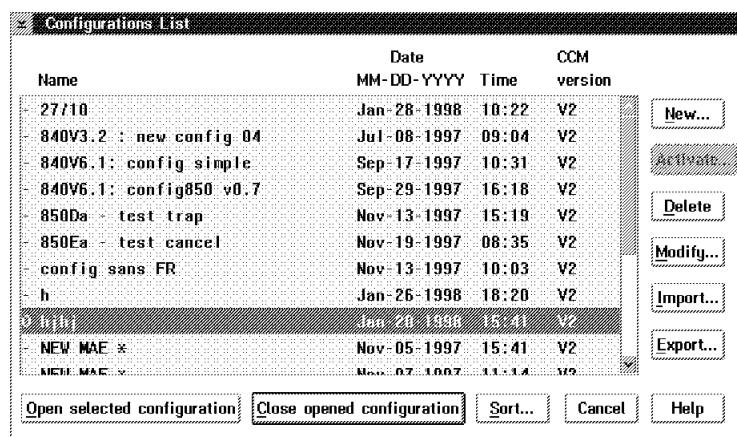


Figure 10. Configurations List

- 6. When the configuration is opened, from the main window, click on **File**, then click on **Save**.

Repeat, or ask your customer to repeat the **same procedures** for **each** of the CCM **configurations** that he his is going to reuse.

Now you are able to activate any configuration by clicking on **Open**, select the configuration from the list, then click on **Activate**.

Note: If your customer has decided to remove the Token-ring link between the MAE and the 3746-9X0 (no more APPN traffic between the MAE and 3746), ask him to update his configuration to remove the definition of the resources used for this link.

Go To

Before starting the installation of this EC, which level of code was installed on your SP ?

- Microcode EC **F12380X** (microcode available on **CD-ROM**), go to 10.4.3, "Logging OFF from Service Processor." on page 34
- Any other EC level **prior to F12380** (microcode available on **OD**) , go to 10.4.2, "Adapter Code Loading per Processor Type." on page 32.

10.4.2 Adapter Code Loading per Processor Type.

Note

This procedure is used to define which network routing protocol is loaded per processor type. If your customer do not want to specify this information, go to 10.4.3, "Logging OFF from Service Processor." on page 34 (All protocols will be loaded in all type of processors).

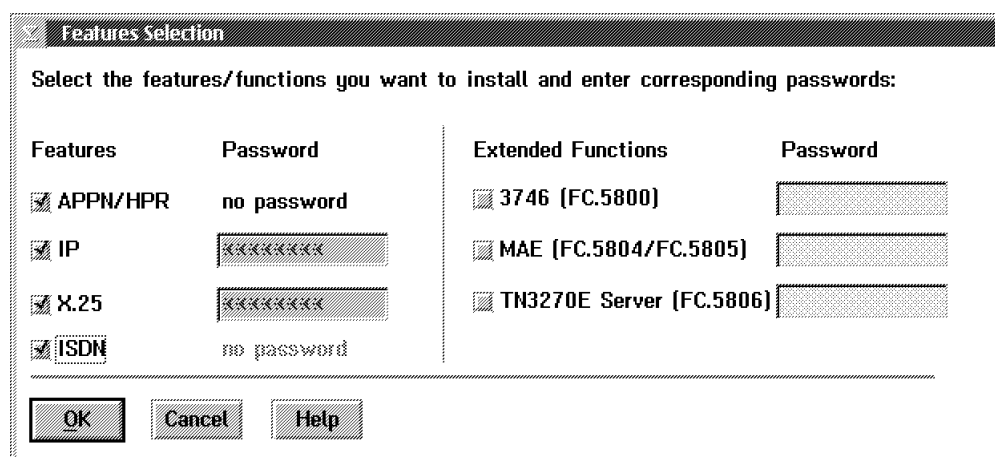
1. On the **Service Processor** menu, click on **Configuration Management**, then click on **Manage 3745/3746 Installation/Removal**
2. On the **Controller Installation** menu, select the 3746-9x0 by clicking on the **<3746-9x0>** line, then click on **"Select Feature"**.

Controller	Type	Model	S/N	Last changes saved
BS8-810L	<3745 not installed>	3746	950 (APPN)	12-34567
BS FVT	3745	900	BS-24681	<Not saved>
	3746	900	BS-24681	<Not saved>
<New>	<3745 not installed>			
	<3746 not installed>			
<New>	<3745 not installed>			
	<3746 not installed>			
<New>	<3745 not installed>			
	<3746 not installed>			

Buttons: Add... Save... Remove... Clean... Change... Repair... Select Feature Cancel Help

Status: 3746 M.E.S. 900->950

3. On the **Feature Selection** menu, click on **OK**.



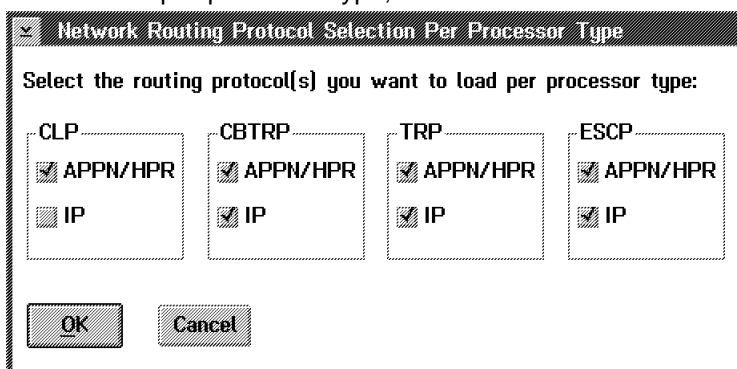
Features Selection

Select the features/functions you want to install and enter corresponding passwords:

Features	Password	Extended Functions	Password
<input checked="" type="checkbox"/> APPN/HPR	no password	<input type="checkbox"/> 3746 (FC.5800)	
<input checked="" type="checkbox"/> IP	xxxxxxx	<input type="checkbox"/> MAE (FC.5804/FC.5805)	
<input checked="" type="checkbox"/> X.25	xxxxxxx	<input type="checkbox"/> TN3270E Server (FC.5806)	
<input checked="" type="checkbox"/> ISDN	no password		

OK Cancel Help

4. According to the customer's requirement, On the **Network Routing Protocol Selection Per Processor Type** menu, disable or enable the protocol loaded per processor type, then click on **OK** button.



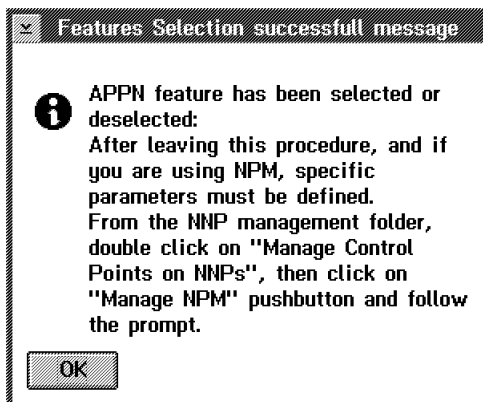
Network Routing Protocol Selection Per Processor Type

Select the routing protocol(s) you want to load per processor type:

CLP	CBTRP	TRP	ESCP
<input checked="" type="checkbox"/> APPN/HPR	<input checked="" type="checkbox"/> APPN/HPR	<input checked="" type="checkbox"/> APPN/HPR	<input checked="" type="checkbox"/> APPN/HPR
<input type="checkbox"/> IP	<input checked="" type="checkbox"/> IP	<input checked="" type="checkbox"/> IP	<input checked="" type="checkbox"/> IP

OK Cancel

5. Read the information message, then click on **"OK"** button.



Features Selection successfull message

i APPN feature has been selected or deselected:
 After leaving this procedure, and if you are using NPM, specific parameters must be defined.
 From the NNP management folder, double click on "Manage Control Points on NNPs", then click on "Manage NPM" pushbutton and follow the prompt.

OK

6. When completed, click on **"OK"** and perform a general IML to activate the feature installed, then go to 10.4.3, "Logging OFF from Service Processor." on page 34

10.4.3 Logging OFF from Service Processor.

- ___ 1. On **MOSS-E View** window, click on **Program**.
- ___ 2. Click on **LOG OFF MOSS-E**.

11.0 Test Procedures

Not applicable.

12.0 Field Updating

None.

After Installation (13-15)

13.0 Publications Update

None.

14.0 Parts Disposition

If during the installation of this EC you had to remove an optical disk drive, you **MUST RETURN** this Optical Disk Drive following the instructions given on the Returned Material Equipment Report (RMER) provided with this FBM.

Return Container To :- Ship To Code 788 6XA

IBM NEDERLAND N. V.
C.O. NEDLOYD DISTRIBUTION CENTER
WESTPOORT B.V.
SCHARENBURG 1, 1046 BA AMSTERDAM
NEDERLAND.

The LIC (Optical Disk) is declared as Sensitive parts. Keeping the Master and Back-up Disks, RETURN all extra Optical disks to your local Branch office, to be returned to plant of Manufacturing HAVANT.

3746 FBM	PN 26L0126 34 of 36	EC F12710 29 May 98	EC F34775 15 Jun 98	EC F12710A 06 Jul 98	EC F52323 23 Jul 98	
-------------	------------------------	------------------------	------------------------	-------------------------	------------------------	--

15.0 Machine Records

- Install updated machine history provided.
- Report the installation (as MES activity) and quality according to the existing procedure.

End of instructions.

3746 FBM	PN 26L0126 35 of 36	EC F12710 29 May 98	EC F34775 15 Jun 98	EC F12710A 06 Jul 98	EC F52323 23 Jul 98	
-------------	------------------------	------------------------	------------------------	-------------------------	------------------------	--

3746 FBM	PN 26L0126 36 of 36	EC F12710 29 May 98	EC F34775 15 Jun 98	EC F12710A 06 Jul 98	EC F52323 23 Jul 98	
-------------	------------------------	------------------------	------------------------	-------------------------	------------------------	--